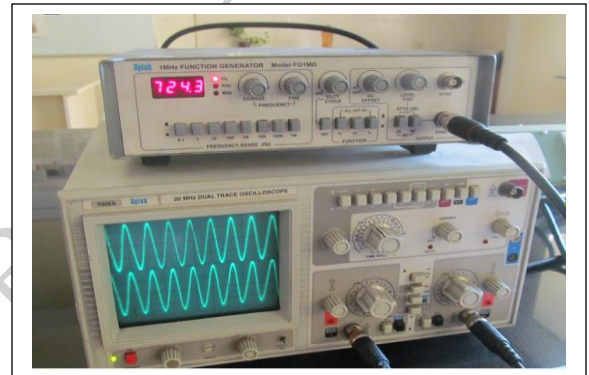
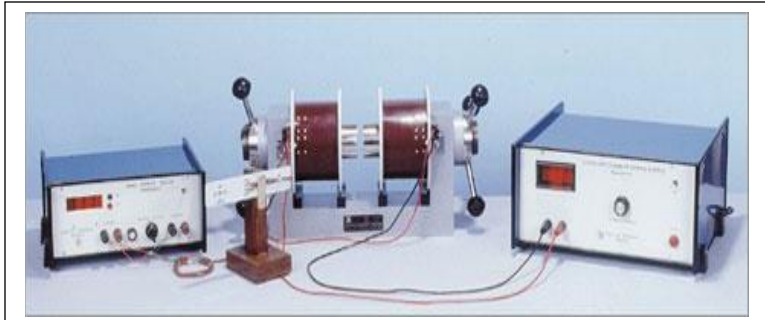


PRODUCT GUIDE

PHYSICS AND ELECTRONICS LAB TRAINING MODULES



DELTA ELECTRONICS

Address: 159, Suyog Nagar, Opp. NIT Garden,
Near Mania Fitness Gym, Ring Road, Nagpur-15
Ph : 0712-3550901 Mob: 9823151679 , 9270509886
Email : deltaelectronics22@gmail.com,
Website: deltaelectronicsngp.com



TESTING MEASURING AND LABORATORY INSTRUMENTS

Analog oscilloscopes
Digital storage oscilloscopes
Spectrum analyzers
Logic analyser (pc based)
Function generator/frequency counter/
Soldering stations

DC regulated power supplies signal channel
Multimeter /clamp meter
Decade capacitance box
Decade inductance box
Decade resistance box



Fig. Cathod Ray Oscilloscope

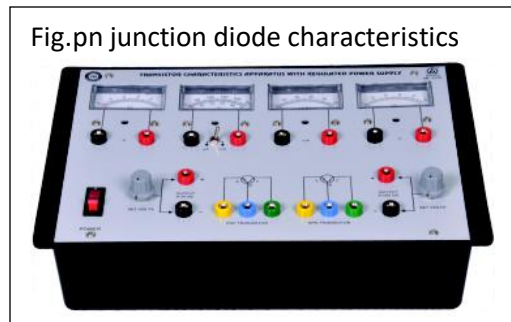


fig. AF Function Generator

ELECTRONICS LAB TRAINING MODULES

- DE - 001 PN Junction Diode Characteristics
- DE - 002 Zener Diode Characteristics
- DE - 003 Experimental Set-Up For Plotting CB Characteristics
- DE - 004 Zener Diode As A Shunt Regulator
- DE - 006 Voltage regulator using IC LM 317
- DE-007 Characteristics of Diode & LED
- DE-008 JFET Characteristics
- DE - 046 MOSFET Characteristics
- DE - 047 IGBT Characteristics
- DE - 051 SCR Characteristics
- DE -052 Diac Characteristics
- DE - 053 Triac Characteristics
- DE - 054 UJT Characteristics
- DE - 055 Transistor as a switch
- DE-056 Study of Half - Wave rectifier
- DE-056 Center - Tapped Fullwave Rectifier

Fig.pn junction diode characteristics



DELTA ELECTRONICS

159, Suyog Nagar, Opp. NIT Garden, Near Mania Fitness Gym, Ring Road, Nagpur-15
Ph : 0712-3550901 Mob: 9823151679 , 9270509886
Email : deltaelectronics22@gmail.com,
Website:deltaelectronicsngp.com

- DE-075 Bridge Type Fullwave Rectifier
- DE-076 Logic Gate Trainer using IC,s
- DE-077 Binary To Gray Code Converter
- DE - 100 Basic Logic Gates using Diode & Transistors
- DE - 101 Gray To Binary Code Converter
- DE-102 Half Adder Using Logic Gates
- DE - 103 Half Subtractor Using Logic Gates
- DE - 103 Half Subtractor Using Logic Gates
- DE - 104 Full Subtractor Using Logic Gates
- DE - 105 Full Adder Using Logic Gates
- DE - 106 Demorgan's Theorem
- DE - 107 Boolean Expression using logic gates
- DE - 108 BCD to 7 Segment Decoder using IC 7447
- DE-109 BCD to Decimal Decoder using IC 7442
- DE-110 Decimal to BCD Encode using IC 74147
- DE-111 Bidirectional Buffer Using Ic 74245
- DE-112 NAND & NOR As a Universal Gate
- DE - 115 4:1 Multiplexer Using IC 74153
- DE - 119 8:1 Mux Using IC 74151
- DE - 121 16:1 Mux Using IC 74150
- DE - 122 1:4 Demultiplexer Using IC 74139fig. e/m by Thomson method
- DE - 123 1:8 Demultiplexer Using IC 74138
- DE - 124 1:16 Demultiplexer Using IC 74154
- DE - 125 RS Flip- Flop Using NAND & NOR Gate
- DE - 126 D & T Flip – Flop
- DE - 131 J-K Master Slave Flip-Flop
- DE - 134 J-K Flip-Flop Using NAND Gate
- DE - 137 Controlled Invertor using Ex-OR Gate
- DE - 138 Decade Counter Using IC 7490
- DE - 140 Up-Down Counter using IC 7476
- DE - 155 Mod N (2 to 9) counter using IC 7490
- DE-156 4Bit Shift Register Using IC74194
- DE-157 Arthmetic& logic unit using IC 74181
- DE - 165 Study of Kirchoff'sLaw(KCL & KVL)Fig. Network Theorem
- DE - 200 Superposition Theorem

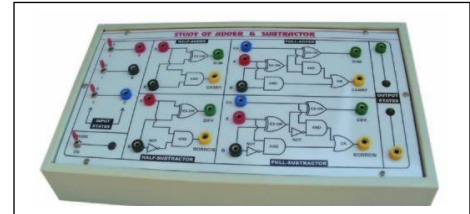


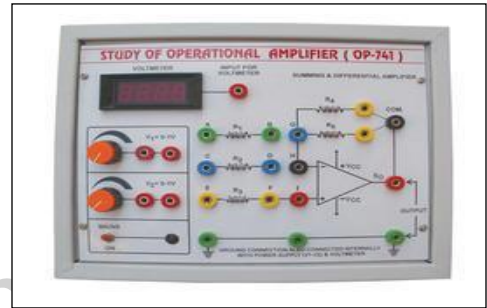
Fig. Adder/Subtractor Trainer



DELTA ELECTRONICS

159, Suyog Nagar, Opp. NIT Garden, Near Mania Fitness Gym, Ring Road, Nagpur-15
 Ph : 0712-3550901 Mob: 9823151679 , 9270509886
 Email : deltaelectronics22@gmail.com,
 Website:deltaelectronicsngp.com

- DE - 201 Norton's Theorem
 DE -202 Thevenin's Theorem
 DE -203 Maximum Power Transfer Theorem
 DE -204 Reciprocity Theorem
 DE -205 Tellegan's Theorem
 DE -206 Millman's Theorem
 DE -207 RLC Series Resonance Circuit
 DE -208 RLC Parallel Resonance Circuit
 DE-209 Two Port Network Parameter
 DE-210 Charging &Discharging of Capacitor
 DE-211 Bridge Circuits
 DE 252 Wheatstone Bridge
 DE-300 Non-Inverting Op-Amp using IC 741
 DE-301 Inverting Op-Amp using IC 741
 DE-302 Op-Amp Parameter & Application Trainer
 DE-303 Inverting/Noninverting Op-Amp using 741
 DE-306 Op-Amp as Adder using IC 741
 DE - 307 Op - AMP Buffer Using IC 741
 DE - 308 OP - AMP Subtractor Using IC 741
 DE-309 Op - AMP Comparator Using IC 741
 DE - 310 Integrator Using OP - AMP IC 741
 DE - 311 Diffreniator Using OP - AMP IC 741
 DE - 312 I to V & V to Converter
 DE-313 Op - AMP Schmitt Trigger Using IC 741
 DE - 314 Zero Crossing Detector
 DE - 315 Active Peak Detector
 DE - 316 IC 555 AsAstableMultibibrator
 DE - 317 IC 555 AsBistable Multivibrator
 DE - 318 IC 555 AsMonostanble Multivibrator
 DE - 319 Second Order Low - Pass Butterworth Filter
 DE - 320 Second Order High - Pass Butterworth Filter
 DE - 321 Wide Band Pass Filter
 DE-322 Op-Amp as Clipper
 DE-323 Op-Amp as Clammer
 DE-324 Square Wave Generator using Op-Amp 741



DELTA ELECTRONICS

159, Suyog Nagar, Opp. NIT Garden, Near Mania Fitness Gym, Ring Road, Nagpur-15
 Ph : 0712-3550901 Mob: 9823151679 , 9270509886
 Email : deltaelectronics22@gmail.com,
 Website:deltaelectronicsngp.com

- DE-325 Instrumentation Amplifier using Op-Amp 741
- DE-326 Astable Multivibrator using Op-Amp 741
- DE-327 Monostable Multivibrator using Op-Amp 741
- DE-328 Bistable Multivibrator using Op-Amp 741
- DE-329 Phase shift oscillator using Op-Amp 741
- DE-330 Triangular Generator using Op-Amp 741
- DE -331 VCO using 565
- DE-332 Sample & Hold Circuit
- DE-400 Single Stage CE Amplifier
- DE-401 Single Stage CB Amplifier
- DE-402 Single Stage CC Amplifier
- DE-403 Two Stage RC Coupled Amplifier
- DE-404 FET Amplifier
- DE -405 Single Tuned Amplifier
- DE - 500 Analog To Digital To Analog Converter
- DE - 500 Astable Multivibrator Using Transistor
- DE - 500 Differentiator Using Op- Amp IC 741
- DE - 501 Clipper & Clamper Circuit
- DE - 502 Astable Multivibrator using Transistor
- DE - 503 Monostable Multivibrator Using Transistor
- DE - 504 Bistable Multivibrator Using Transistor
- DE - 505 RC Integrator & Differentiator
- DE - 506 UJT As Relaxation Oscillator
- DE - 507 Digital To Analog Converter
- DE-508 RC Phase Shift Oscillator
- DE-511 Colpitt Oscillator
- DE -512 Hartley Oscillator using Transistor
- DE -551 Study of RAM
- DE -600 Solar Cell Characteristics Apparatus
- DE -601 Energy Band Gap Apparatus
- DE-602 Ohms Law Apparatus Solar Cell Characteristics
- DE-603 Thermistor Characteristics Apparatus
- RPS 501F DC Power Supply 5V ,1A
- RPS 1201F DC Power Supply +- 12V, 1A

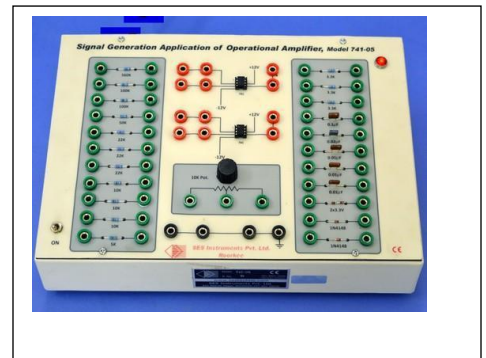


fig. Gate Trainer Kit

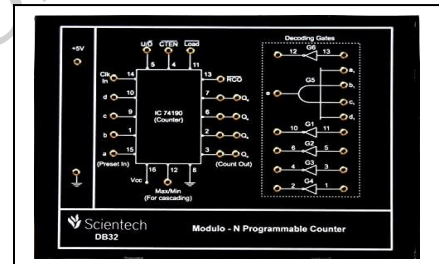


DELTA ELECTRONICS

159, Suyog Nagar, Opp. NIT Garden, Near Mania Fitness Gym, Ring Road, Nagpur-15
 Ph : 0712-3550901 Mob: 9823151679 , 9270509886
 Email : deltaelectronics22@gmail.com,
 Website:deltaelectronicsngp.com

DIGITAL ELECTRONICS LAB TRAINING MODULES

- Logic Gates using Six TTL IC's (6 in 1)
- RTL Logic Gates (5 in 1)
- Basic Logic Gate using Discrete Components (7 in 1)
- Digital Logic Trainer (Logic Gates, Boolean Identities & Demorgan's Theorems)
- Verification of truth tables of Logic Gates using Universal Gates
- Pulse/ Clock Generator using NAND Gate
- 4 Bit Adder & Subtractor Circuits using IC 7483
- Digital Full Adders & Subtractors using NAND Gates
- Flip Flops using NAND Gates & TTL IC's
- Decade / Modulo-N Counter
- 4 Bit Counters (Synchronous & Asynchronous)
- 4 Bit Shift Registers
- Encoder & Decoder Circuits
- 16 to 1 line Multiplexer & 1 to 16 Line Demultiplexer
- Encoder/Multiplexer
- Decoder/ DeMultiplexer
- RAM Circuit using IC 7489
- Parity Generator/Checker with Bakelite Front Panel
- 4 Bit Digital Comparator
- 4/8 Bit Analog to Digital Converter
- 4 Bit A/D Converter fig. dsb/ssb transmitter &
- 4/8 Bit Digital to Analog Converter
- 4 Bit D/A Converter
- Transfer Characteristics of TTL and TTL Schmit Trigger Inverter
- TTL-CMOS, CMOS-TTL Interfacing
- Arithmetic/Logic Unit (ALU)
- TTL IC Characteristics Apparatus
- CMOS IC Characteristics Apparatus
- Digital Lab Trainer (with Bread Board)



4 bit D/A Converter

DELTA ELECTRONICS

159, Suyog Nagar, Opp. NIT Garden, Near Mania Fitness Gym, Ring Road, Nagpur-15

Ph : 0712-3550901 Mob: 9823151679 , 9270509886

Email : deltaelectronics22@gmail.com,

Website:deltaelectronicsngp.com

BASIC AND ADVANCE COMMUNICATION LAB TRAINING MODULES

- Amplitude Modulation & Demodulation
- Frequency Modulation and Demodulation
- Pulse Amplitude Modulation & Demodulation
- Pulse Width Modulation & Demodulation
- Pulse Position Modulation & Demodulation
- PAM/PPM/PWM Modulation & Demodulation
- Phase Modulation and Demodulation
- Frequency Shift Keying Modulation & Demodulation
- Amplitude Shift Keying Modulation & Demodulation
- Phase Shift Keying Modulation & Demodulation
- Pulse Code Modulation and Demodulation
- Delta Modulation and Demodulation
- Adaptive Delta Modulation and Demodulation
- Single Side Band Modulation & Demodulation
- Sample & Hold Circuit using Op-Amp
- Detection of FM using Phase locked loop (PLL)
- Balanced Modulator/DSB-SC (DSB-SC Amplitude Modulation and Demodulation)
- Frequency Division Multiplexer & Demultiplexer
- QAM Modulation & Demodulation
- Frequency Modulation & Demodulation
- Delta, Adaptive Delta and Delta Sigma Modulation & Demodulation
- TDM Pulse Code Modulation Transmitter
- TDM Pulse Code Modulation Receiver
- Data Formatting and Carrier Modulation Transmitter
- Data Formatting and Carrier Demodulation Receiver
- Analog Signal Sampling & Reconstruction
- TDM Pulse Amplitude Modulation & Demodulation
- 8 Bit Variable Data Generator for Model



fig Modulation & Demodulation kit



Fig. Delta Modulation & Demodulation



fig. TDM

DELTA ELECTRONICS

159, Suyog Nagar, Opp. NIT Garden, Near Mania Fitness Gym, Ring Road, Nagpur-15

Ph : 0712-3550901 Mob: 9823151679 , 9270509886

Email : deltaelectronics22@gmail.com,

Website: deltaelectronicsngp.com

PHYSICS LAB EXPERIMENT SETUP

- Measurement of High Resistance using Substitution Method
- Lissajous Figure Apparatus
- Stefan Constant Apparatus
- Dielectric Constant Apparatus (Solid & Liquid)
- Hall Effect Experiment (Complete Setup)



Hall Effect Experiment

- Fourier Analysis Kit
- Measurement of Susceptibility of Paramagnetic Solution by Quinck's Tube Method
- Heat Efficiency of an Electric Kattel
- Choke Charateristics Apparatus
- Inductance Measurement (using Impedance at Different Frequencies)
- Determine the Hight of Tower with the Help of Sextant
- GM Counter Experimental Setup



DELTA ELECTRONICS

159, Suyog Nagar, Opp. NIT Garden, Near Mania Fitness Gym, Ring Road, Nagpur-15

Ph : 0712-3550901 Mob: 9823151679 , 9270509886

Email : deltaelectronics22@gmail.com,

Website:deltaelectronicsngp.com

GM Counter Experimental Setup

- Determine The Ballistic Constant of a Ballistic Galvanometer (Complete Setup)
- Determine The ECE of Copper using Tangent Galvanometer (Complete Setup)
- Determine the Wavelength of Sodium Light by Fresnel's Biprism Kit (Complete Setup)

- Determine the Focal Length of Two Lenses by Nodal Slide and Locate the Position of Cardinal Points (Complete Setup)
- Determine of the Specific Rotation of the Cane Sugar Solution with the Help of Polarimeter (Complete Setup)
- Determine the Wavelength of Spectral Lines using Plane Transmission Grating (Complete Setup)
- Determine the Viscosity of a Liquid by Stroke's Method (Complete Setup)
- Determine the Frequency of AC Mains by Electrical Vibrator



Electrical Vibrator

- Determine the Wave Length of Sodium Lamp by Newton Ring Method (Complete Setup)
- Determine Magnetic Field using Stewart and Gee's Apparatus (Complete Setup)
- Determine the Velocity of Ultrasonic Waves by using a Crystal (Complete Setup)
- Laser Experimental Setup with Diode Laser (Complete Setup)
- Laser Experimental Setup with He-Ne Laser (Complete Setup)
- He-Ne Laser with Power Supply (Complete Setup)
- High Resistance by Leakage Method (Complete Setup)
- Thermo electric e.m.f. with temperature for a copper iron thermo couple, by means of a potentiometer (Complete Setup)

DELTA ELECTRONICS

159, Suyog Nagar, Opp. NIT Garden, Near Mania Fitness Gym, Ring Road, Nagpur-15

Ph : 0712-3550901 Mob: 9823151679 , 9270509886

Email : deltaelectronics22@gmail.com,

Website:deltaelectronicsngp.com

- Calibration of Voltmeter using Potentiometer (Complete Setup)



Calibration of Voltmeter using Potentiometer

- Determine Young's modulus's, modulus of rigidity and poisson's ratio of the material of a given wire by Searle's dynamical method (Complete Setup)
- Determine the Frequency of a Tuning Fork with the help of Sonometer
- Determine the Frequency of A.C. mains by means of a Sonometer (Complete Setup)
- Determine the Dispersive Power of the Material of the Prism for Violet & Yellow Colors of Mercury Light with the Help of Spectrometer (Complete Setup)
- Determine the Resolving Power of Telescope (Complete Setup)
- Determine the Wave Length of Sodium Lamp by Michelson Interferometer (Complete Setup)
- Determine the Refractive Index of Liquid using Diode Laser (Complete Setup)
- Determine the Malus Law using Diode Laser (Complete Setup)
- Determine the Brewster Angle using Diode Laser (Complete Setup)
- Determine the Refractive Index of Prism using white light & Spectrometer (Complete Setup)
- Carrey Foster Bridge with Four Gap (Complete Setup)



Carrey Foster Bridge with Four Gap

- Determine Thermal Conductivity using Lee's Disc Apparatus (Complete Setup)

DELTA ELECTRONICS

159, Suyog Nagar, Opp. NIT Garden, Near Mania Fitness Gym, Ring Road, Nagpur-15

Ph : 0712-3550901 Mob: 9823151679 , 9270509886

Email : deltaelectronics22@gmail.com,

Website:deltaelectronicsngp.com

- Sodium Vapour Lamp 35 Watt fitted in Box with Transformer
- Sodium Vapour Lamp 55 Watt fitted in Box with Transformer
- Mercury Vapour Lamp 80 Watt fitted in Box with choke

GENERAL PHYSICS LABORATORY INSTRUMENTS

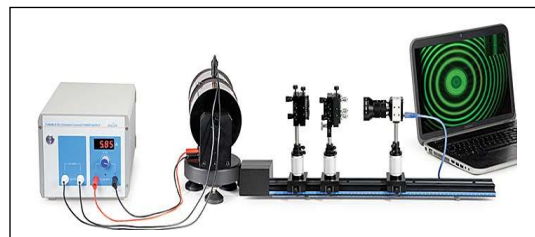
- Digital D.C. Microvoltmeter
- Digital Nanoammeter
- Digital Picoammeter
- High Voltage Power Supply
- True RMS A.C. Millivoltmeter
- Electromagnet
- Constant Current Power Supply
- Gauss meter
- Digital Gaussmeter
- Hand Held Gaussmeter
- PID Controlled Oven
- Travelling Microscope



Traveling Microscope

PHYSICS AND MATERIAL SCIENCE LAB EXPERIMENTS

- X-Ray Diffraction Simulation Experiment
- Magnetic Field Measurement Apparatus
- Study of Dielectric Constant and Curie Temperature of Ferroelectric Ceramics
- Frequency Dependence of Dielectric Constant
- Dielectric Constant of Liquids
- Dielectric Constant of Solids & Liquids
- Dielectric Measurement Setup
- Zeeman Effect Experiment
- Millikan's Oil Drop Experiment
- e/m Experiment
- X-Ray Diffraction Simulation
- Planck's Constant by Photoelectric Effect
- Determination of Planck's Constant by means of LED's
- Frank Hertz Experiment
- Ionisation Potential Set-up



DELTA ELECTRONICS

159, Suyog Nagar, Opp. NIT Garden, Near Mania Fitness Gym, Ring Road, Nagpur-15
 Ph : 0712-3550901 Mob: 9823151679 , 9270509886
 Email : deltaelectronics22@gmail.com,
 Website:deltaelectronicsngp.com

- Resistivity of Semiconductors by Four Probe Method at Different Temperatures and Determination of the Band-gap
- Four Probe set-up for measuring the resistivity of very low to highly resistive samples at temperatures upto 200°C with PID controlled oven

- Four Probe Arrangement with built-in thermocouple sensor
- Standard Samples: Ge, Si and Aluminium
- Oven Unit (upto 200C),
- High Performance PID Controller
- D.C. Microvoltmeter
- Constant Current Source
- Low Current Source Four Probe set-up



- Four Probe measurement set-up for wide range of resistivity samples from -190°C to 200°C temperatures

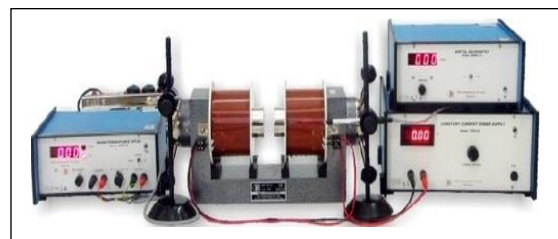
- Four Probe Arrangement with built-in thermocouple sensor
- Standard Samples: Ge, Si and Aluminium
- PID Controller Oven cum Cryostat unit (-190C to 200C)
- D.C. Microvoltmeter
- Constant Current Source
- Low Current Source

- Four Probe Set-up for Mapping the Resistivity of Large Samples

- Four Probe Arrangement with X-Y movement and vernier scales
- Standard Samples: Ge, Si and Aluminium
- D.C. Microvoltmeter
- Constant Current Source
- Low Current Source

- Measurement of Magnetoresistance of Semiconductors

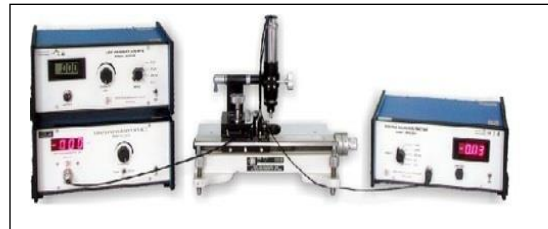
- Four Probe Arrangement
- Sample: Ge Crystal
- Hall Probe Multipurpose Stand
- Magnetoresistance Setup
- Electromagnet
- Constant Current Power Supply
- Digital Gaussmeter Magnetoresistance of Semiconductors



DELTA ELECTRONICS

159, Suyog Nagar, Opp. NIT Garden, Near Mania Fitness Gym, Ring Road, Nagpur-15
 Ph : 0712-3550901 Mob: 9823151679 , 9270509886
 Email : deltaelectronics22@gmail.com,
 Website:deltaelectronicsngp.com

- Measurement of Magnetoresistance in Different Samples
 - a) Four Probe Arrangement suitable for MRX-Research
 - b) Sample: Ge Crystal (n-type)
 - c) Hall Probe Multipurpose Stand
 - d) Constant Current Source
 - e) Digital D.C. Microvoltmeter
 - f) Electromagnet
 - g) Constant Current Power Supply
 - h) Digital Gaussmeter Four Probe Arrangement



- Measurement of Magnetoresistance in Bismuth
 - a) Four Probe Arrangement
 - b) Sample: Bismuth
 - c) Hall Probe Multipurpose Stand
 - d) Constant Current Source
 - e) Digital D.C. Microvoltmeter
 - f) Electromagnet
 - g) Constant Current Power Supply
 - h) Digital Gaussmeter



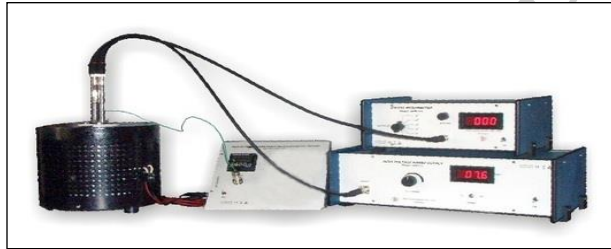
Digital D.C. Microvoltmeter

- Two Probe Method for Resistivity Measurement of Insulators(upto 1013W.cm.) at Different Temperatures
 - a) Two Probe Arrangement with built-in thermocouple sensor
 - b) Test Sample: 1G resistance (not for experiment)
 - c) Oven Unit (upto 200°C)
 - d) High Performance PID Controller
 - e) High Voltage Power Supply
 - f) Digital Picoammeter
- Two Probe Method for Resistivity Measurement of Insulators(upto 1013W.cm.) at Different Temperatures with USB based computer interface
 - a) Two Probe Arrangement with built-in thermocouple sensor
 - b) Test Sample: 1G resistance (not for experiment)
 - c) Oven Unit (upto 200°C)

DELTA ELECTRONICS

159, Suyog Nagar, Opp. NIT Garden, Near Mania Fitness Gym, Ring Road, Nagpur-15
 Ph : 0712-3550901 Mob: 9823151679 , 9270509886
 Email : deltaelectronics22@gmail.com,
 Website:deltaelectronicsngp.com

- d) High Performance PID Controller with computer interface
- e) High Voltage Power Supply
- f) Digital Picoammeter
- g) Computer Aided Measurement Module, SES CAMM, complete with suitable software
- High Temperature Two Probe Set-up(Suitable for temperature upto 600°C, including highly stable PID Controller, 1500V EHTPower Supply and high resolution Picoammeter)
 - a) Two Probe Arrangement with built-in thermocouple sensor
 - b) Test Sample: 1G resistance (not for experiment)
 - c) Oven Unit (upto 600°C)
 - d) High Performance PID Controller
 - e) High Voltage Power Supply
 - f) Digital Picoammeter



Two Probe Set-up

- High Temperature Two Probe Set-upwith USB based computer interface facility(Suitable for temperature upto 600°C, including highly stable PID Controller, 1500V EHT Power Supply and high resolution Picoammeter)
 - a) Two Probe Arrangement with built-in thermocouple sensor
 - b) Test Sample: 1G resistance (not for experiment)
 - c) Oven Unit (upto 600°C)
 - d) High Performance PID Controller with computer interface
 - e) High Voltage Power Supply
 - f) Digital Picoammeter
 - g) Computer Aided Measurement Module, SES CAMM, complete with suitable software
- Electron Spin Resonance Spectrometer
- NMR Experiment, NMR-01

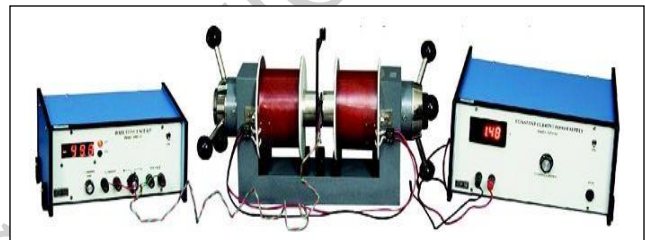
DELTA ELECTRONICS

159, Suyog Nagar, Opp. NIT Garden, Near Mania Fitness Gym, Ring Road, Nagpur-15
 Ph : 0712-3550901 Mob: 9823151679 , 9270509886
 Email : deltaelectronics22@gmail.com,
 Website:deltaelectronicsngp.com

- Study of Thermoluminescence of F-centres in Alkali Halide Crystals
 - a) Experimental set-up for creating the Thermoluminescence(Oven with power supply, digital thermometer, samples, black box etc.)
 - b) For Measuring of Luminescence Intensity
 - i. Photomultiplier Tube
 - ii. PMT Housing with biasing circuit
 - iii. EHT Power Supply
 - iv. Digital Nanoammeter
- Thermoluminescence Irradiation Unit(Irradiation unit suitable for irradiating alkali halide samples for thermoluminescence experiment)

- Hall Effect Experiment

- a) Hall Probe (p and n type)
- b) Hall Probe Multipurpose Stand
- c) Hall Effect Set-Up
- d) Electromagnet
- e) Constant Current Power Supply
- f) Digital Gaussmeter



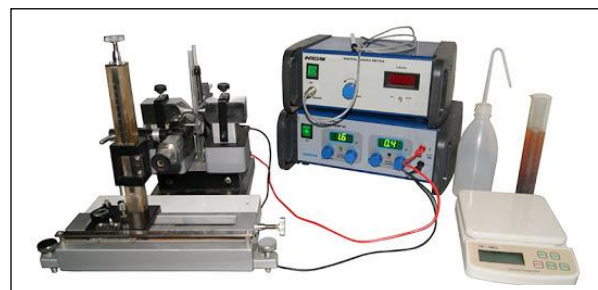
Hall effect

- Dependence of Hall Coefficient on Temperature

- a) Hall Effect Setup
- b) Hall Probe (Ge : p-type) with a small oven and a Thermocouple
- c) Hall Probe Multipurpose Stand
- d) Electromagnet
- e) Constant Current Power Supply
- f) Digital Gaussmeter

- Apparatus for the Measurement of Susceptibility of Paramagnetic Solution by Quinck's Tube Method

- a) Quinck's tube
- b) Q-Tube multipurpose Stand
- c) Sample : $MnSO_4 \cdot H_2O$
- d) RD Bottle
- e) Mixing Bottle
- f) Electronic Balance
- g) Travelling Microscope
- h) Electromagnet Quinck's Tube Method
- i) Constant Current Power Supply

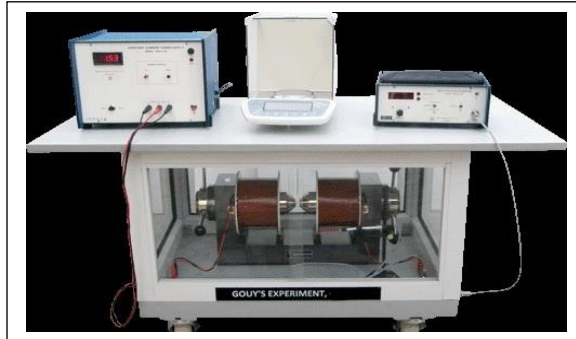


DELTA ELECTRONICS

159, Suyog Nagar, Opp. NIT Garden, Near Mania Fitness Gym, Ring Road, Nagpur-15
 Ph : 0712-3550901 Mob: 9823151679 , 9270509886
 Email : deltaelectronics22@gmail.com,
 Website:deltaelectronicsngp.com

j) Digital Gaussmeter

- Apparatus for the Measurement of Susceptibility of Solids by Gouy's Method
- Magnetic Hysteresis Loop Tracer
- Study of the energy band-gap and diffusion potential of P-N Junctions
- Diode Characteristics & Boltzman Constant



Susceptibility of Solids by Gouy's Method

FILTER CIRCUITS

- T' type Passive Low Pass, High Pass, Band Pass & Band Stop filters
- M-Derived 'T' type Passive Low Pass & High Pass Filters
- "p" type Passive Low Pass High Pass, Band Pass & Band Stop filter
- Twin-T Active Notch Filter using Operational Amplifier
- Active filters using Operational Amplifier
- Transient Response of RLC Circuit with built-in Square Wave Oscillator
- Cascaded Two Port Network
- "T", "p" & "Bridge T" Type Attenuators
- RC, Low Pass, High Pass, Band Pass & Band Stop Filters

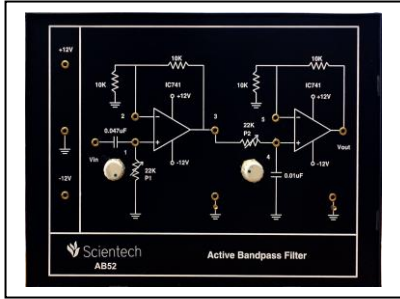
DELTA ELECTRONICS

159, Suyog Nagar, Opp. NIT Garden, Near Mania Fitness Gym, Ring Road, Nagpur-15

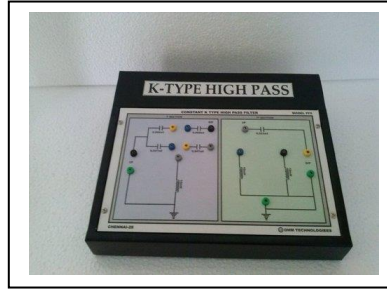
Ph : 0712-3550901 Mob: 9823151679 , 9270509886

Email : deltaelectronics22@gmail.com,

Website:deltaelectronicsngp.com



Active Low Pass Filter



Composite High Pass Filter

INSTRUMENTATION AND LAB TRAINING MODULES

Instrumentation Trainer Using Transducers (Complete with following Experimentalstudy)

Study of LVDT

Study of RTD

Study of Thermocouple

Study of Thermistor

Study of Opto Devices (Photo Diode, Photo Transistor, LDR, Zener, Diode)

Study of Wheatstone Bridge & Instrumentation Amplifier

- Strain Gauge Trainer Kit (with Cantilever Beam)
- LVDT Trainer Kit
- RTD Trainer Kit
- Thermocouple Trainer Kit
- Speed Measurement Module using Photo Electric Sensor
- Speed Measurement Module using Magnetic Sensor
- Inductive Pick Up
- Capacitive Pick Up
- Piezo Electric Transducer
- Hall Effect Sensor
- Pressure Measurement using Strain Gauge
- Load Cell Trainer Kit
- Temperature Sensors Kitfig. Transducer Trainer
- Study of Linear Potentiometer instrument trainer
- Data Logger (Voltage,Current,Temperature&Pressur)



DELTA ELECTRONICS

159, Suyog Nagar, Opp. NIT Garden, Near Mania Fitness Gym, Ring Road, Nagpur-15

Ph : 0712-3550901 Mob: 9823151679 , 9270509886

Email : deltaelectronics22@gmail.com,

Website:deltaelectronicsngp.com

BREAD BOARD TRAINERS

- Bread Board Trainer with Power Supplies (General Purpose)
- Operational Amplifier Trainer (Bread Board Model)
- Digital Electronics Circuit Trainer (Bread Board Model)
- OP Set of 20 IC's & Instruction Manual for more then 60 Experiments
- Analog Lab Trainer (with Bread Board)
- Digital Lab Trainer (with Bread Board)
- Analog & Digital Lab Trainer (Bread Board Model)
- Amplifier Lab Trainer with Power Supply (with Bread Board)
- Amplifier Lab Trainer with Built in Power Supply, AC Millivoltmeter & Function Generator (with Bread Board)



Fig. Bread board trainer kit.

DYNAMIC DEMONSTRATORS & TRAINER

- Black & White Television Demonstrator (with 14" CRT)
- Color Television Demonstrator (with 20" CRT)
- Color Television Demonstrator (with 14" CRT)
- Video Compact Disc Player Demonstrator
- Digital Versatile Disc Player Demonstrator
- Stereo Tape Recorder Trainer
- Analog Multimeter Trainer
- Digital Multimeter Trainer
- Analog Fiber Optic Voice Transmission Demonstrator
- CRO Demonstrator (20MHz Dual Channel)
- Function Generator Demonstrator



Stereo Tap Recorder

DELTA ELECTRONICS

159, Suyog Nagar, Opp. NIT Garden, Near Mania Fitness Gym, Ring Road, Nagpur-15

Ph : 0712-3550901 Mob: 9823151679 , 9270509886

Email : deltaelectronics22@gmail.com,

Website:deltaelectronicsngp.com

- FM Radio Receiver Demonstrator
- Telephone Trainer
- AM Radio Receiver Demonstrator (Two Band)
- UPS Trainer 500 VA
- Video Cassette Recorder Demonstrator
- EPBAX Demonstrator
- Fax Demonstrator
- Walkie Talkie Demonstrator
- Battery Monitoring System
- Washing Machine Trainer (Automatic)
- Washing Machine Trainer (Semi Automatic)
- Microwave Oven Demonstrator
- Two in One Trainer
- AM / FM Radio Receiver Demonstrator
- Pattern Generator (For TV



Fig. LED TV Demonstrator



Colour Pattern Generator for tv



Semi automatic washing machine

DELTA ELECTRONICS

159, Suyog Nagar, Opp. NIT Garden, Near Mania Fitness Gym, Ring Road, Nagpur-15

Ph : 0712-3550901 Mob: 9823151679 , 9270509886

Email : deltaelectronics22@gmail.com,

Website:deltaelectronicsngp.com

MICROPROCESSOR & MICROCONTROLLER LAB

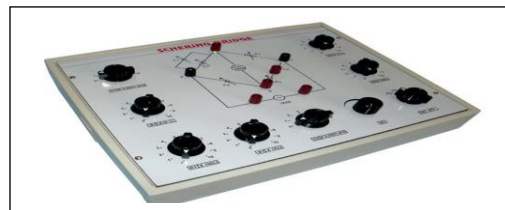
- 8031 Microcontroller Training Kit with Inbuilt Power Supply
- 8031 Microcontroller Training Kit with Inbuilt Power Supply (LCD Display,ASCII Keyboard)
- 8085 Microprocessor Training Kit with Inbuilt Power Supply
- 8085 Microprocessor Training Kit with Inbuilt Power Supply (LCD Display,ASCII Keyboard)
- 8086 Microprocessor Training Kit with Inbuilt Power Supply
- 8086 Microprocessor Training Kit with Inbuilt Power Supply (LCD Display,ASCII keyboard)



Fig. Microprocessor Training Kit

Electric bridges

- Anderson Bridge
- Schering Bridge
- Kelvin Bridge (Industrial))
- Kelvin Bridge (Student)
- Maxwell Inductance Bridge



DELTA ELECTRONICS

159, Suyog Nagar, Opp. NIT Garden, Near Mania Fitness Gym, Ring Road, Nagpur-15

Ph : 0712-3550901 Mob: 9823151679 , 9270509886

Email : deltaelectronics22@gmail.com,

Website:deltaelectronicsngp.com

- Weins Bridge (Capacity Measurement)fig. schering bridge
- Weins Bridge (Frequency Measurement)
- Wheatstone Bridge (Portable)
- Desauty Bridge
- Hay's Bridge
- Owen's Bridge
- Callender and Griffith's Bridge
- Crompton Potentiometer (Complete Setup)
fig. Kelvin Bridge



POWER SUPPLIES

DC Regulated Power Supplies Single Channel / Dual Channel

- Single Output 0 - 30VDC/2 Amps with fixed 5V/3.3V output
- Single Output 0 - 30VDC/5 Amps with fixed 5V/3.3V output
- Single Output 0 - 30VDC/10 Amps
- Single Output 0 - 60VDC/5 Amps
- Single Output 0 - 60VDC/10 Amps (Dual Supply used in series mode)
- Dual Output 0 - +30VDC/2 Amps with fixed 5V/3.3V output
- Dual Output 0 - +30VDC/5 Amps with fixed 5V/3.3V output
- Multiple DC Regulated Power Supply (CH 1: 0-6VDC / 100mA-2Amps, CH 2: 0-32VDC / 100mA-2Amps, CH 3: 0-+15VDC / 100mA-1Amps)



Dual DC Regulated Power Supply

DELTA ELECTRONICS

159, Suyog Nagar, Opp. NIT Garden, Near Mania Fitness Gym, Ring Road, Nagpur-15
 Ph : 0712-3550901 Mob: 9823151679 , 9270509886
 Email : deltaelectronics22@gmail.com,
 Website:deltaelectronicsngp.com

Special Purpose Power Supplies

- DC Power supply 0 - 16Volts / 2Amps with One Digital Voltmeter
- Electronic Standard Cell 1.018 VDC
- Fixed Output DC Regulated Power Supply +5VDC/1Amp
- Fixed Output DC Regulated Power Supply +12VDC/1Amp
- Fixed Output DC Regulated Power Supply +12VDC/2Amp
- Fixed DC power Supply 2V/1A, +6V/1A
- Fixed DC Power Supply 2V/1A , 1.018VDC



DC Power Supply

DELTA ELECTRONICS

159, Suyog Nagar, Opp. NIT Garden, Near Mania Fitness Gym, Ring Road, Nagpur-15

Ph : 0712-3550901 Mob: 9823151679 , 9270509886

Email : deltaelectronics22@gmail.com,

Website:deltaelectronicsngp.com